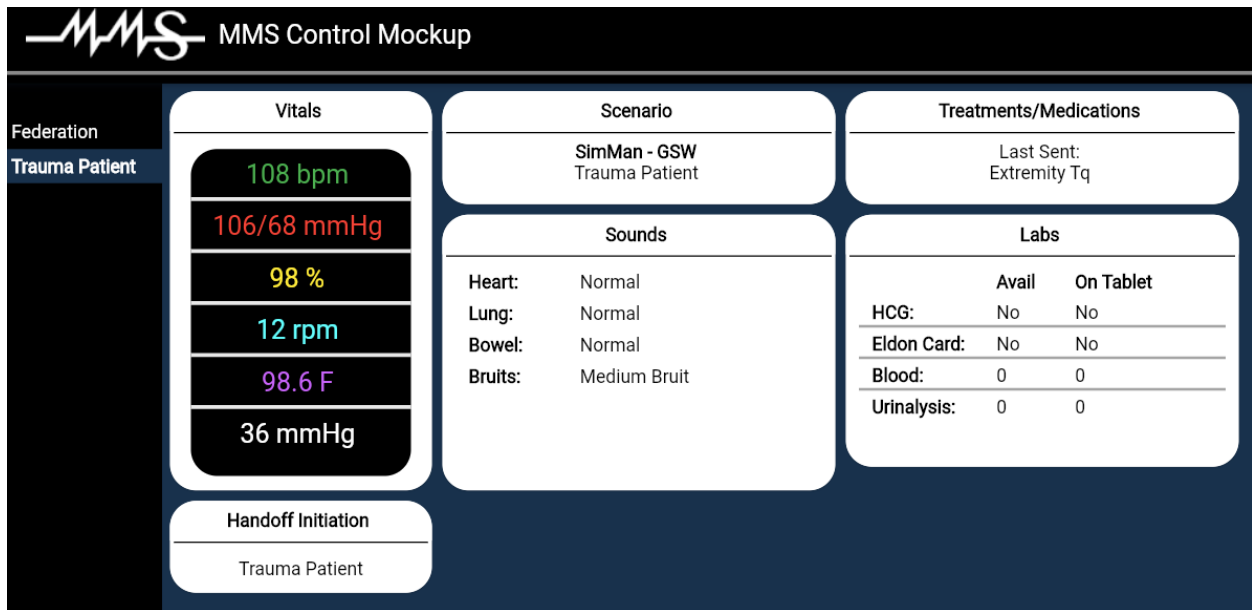


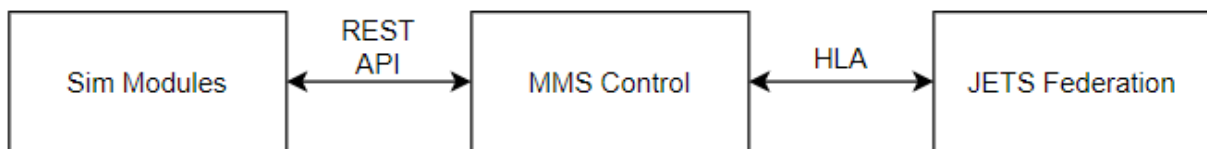


MMS Control

The Medical Modeling and Simulation (MMS) Control software serves as the central patient control system of the JETS federation. MMS Control provides the user with a single interface to connect to the federation, connect to and control local patient simulation modules, administer treatments and medications, and conduct patient handoffs over the federation.



Local patient simulation modules include specialized systems that enhance the capabilities of the manikin, but may not be able to be modified to be HLA-compliant to join the JETS federation. These modules include systems like the SimScope and TruMonitor systems. The MMS Control system provides a local bridge connection to these modules, including but not limited to a REST API bridge.



This bridge allows the modules to interact with the federation via MMS control. The TruMonitor application, for example, displays the vital signs provided by HumMod through the federation by connecting to MMS Control.